

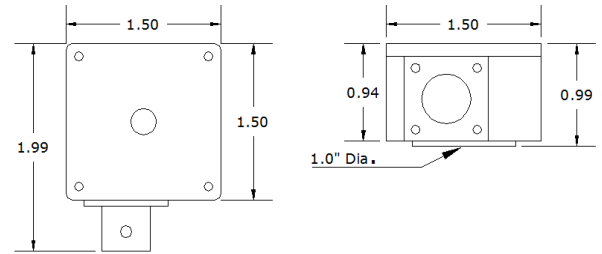
# CMCP1300A Triaxial Accelerometer



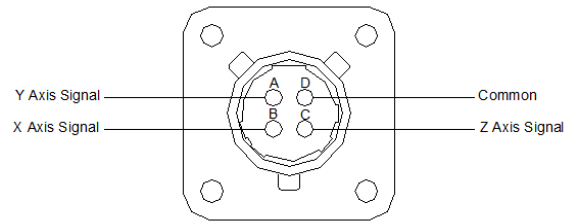
### Features

- Low Cost
- X, Y and Z Outputs
- Small Size Case, 1.50" x 1.50"
- 1/4"-28 UNF Mounting
- 100 mV/g Sensitivity per Channel
- 0.32 Hz to 10 KHz Frequency Range ( $\pm 3$  dB)
- 10% Sensitivity

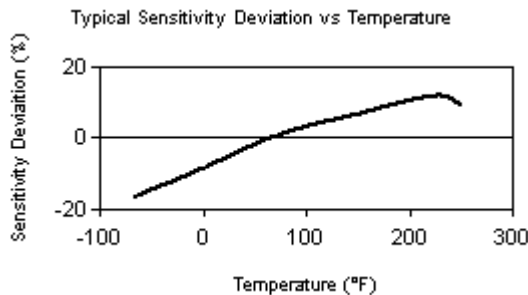
DYNAMIC PERFORMANCE	ENGLISH	SI
Sensitivity ( $\pm 10\%$ )	100 mV/g	10.2 mV/(m/s <sup>2</sup> )
Measurement Range	$\pm 50$ g	$\pm 500$ m/s <sup>2</sup>
Frequency Range: ( $\pm 3$ dB)	0.32 – 10k Hz	0.32 – 10k Hz
Mounted Resonant Freq.	>25 kHz	25 kHz
Amplitude Linearity	$\leq 1\%$	$\leq 1\%$
Transverse Sensitivity	$\leq 5\%$	$\leq 5\%$
<b>ENVIRONMENTAL</b>		
Shock Limit	7,000 g pk	70k m/s <sup>2</sup> pk
Temperature Range (STD)	-65 to +185° F	-54 to 85° C
<b>ELECTRICAL</b>		
Settling Time	2.5 sec	2.5 sec
Excitation Voltage	18 to 28 VDC	18 to 28 VDC
Excitation Constant Current	2 to 20 mA	2 to 20 mA
Output Impedance	<100 ohms	<100 ohms
Output Bias Voltage	8 to 12 VDC	8 to 12 VDC
Electrical Case Isolation	$>10^8$ ohms	$>10^8$ ohms
Electrical Protection	RFI/ESD	RFI/ESD
Integral Cable	22 AWG, 221° F	22 AWG, 105° C
<b>MECHANICAL</b>		
Size	1.50" x 1.50"	38.1 x 38.1 mm
Weight	3 oz	85 g
Mounting Thread	1/4-28 UNF-2B	1/4-28 UNF-2B
Mounting Torque	2 to 5 ft-lb	2.7 to 6.8 N-m
Sensing Element	Ceramic/Shear	Ceramic/Shear
Case Material	Aluminum	Aluminum
Sealing	Potted	Potted
Connector	4-Pin 8SL	Mil-C-26482 S1



CMCP1300A Dimensions



Connector Pin-outs



### Ordering Information:

Part No.	Description
CMCP1300A	Low Cost Triaxial Accelerometer

### Spectral Noise:

1 Hz:	85 $\mu\text{g} / \sqrt{\text{Hz}}$	850 ( $\mu\text{m/s}^2$ ) / $\sqrt{\text{Hz}}$
10 Hz:	10 $\mu\text{g} / \sqrt{\text{Hz}}$	100 ( $\mu\text{m/s}^2$ ) / $\sqrt{\text{Hz}}$
100 Hz:	2.7 $\mu\text{g} / \sqrt{\text{Hz}}$	27 ( $\mu\text{m/s}^2$ ) / $\sqrt{\text{Hz}}$
1000 Hz:	1.0 $\mu\text{g} / \sqrt{\text{Hz}}$	10 ( $\mu\text{m/s}^2$ ) / $\sqrt{\text{Hz}}$

To Order Online Please Visit  
[www.stiwebstore.com](http://www.stiwebstore.com)